

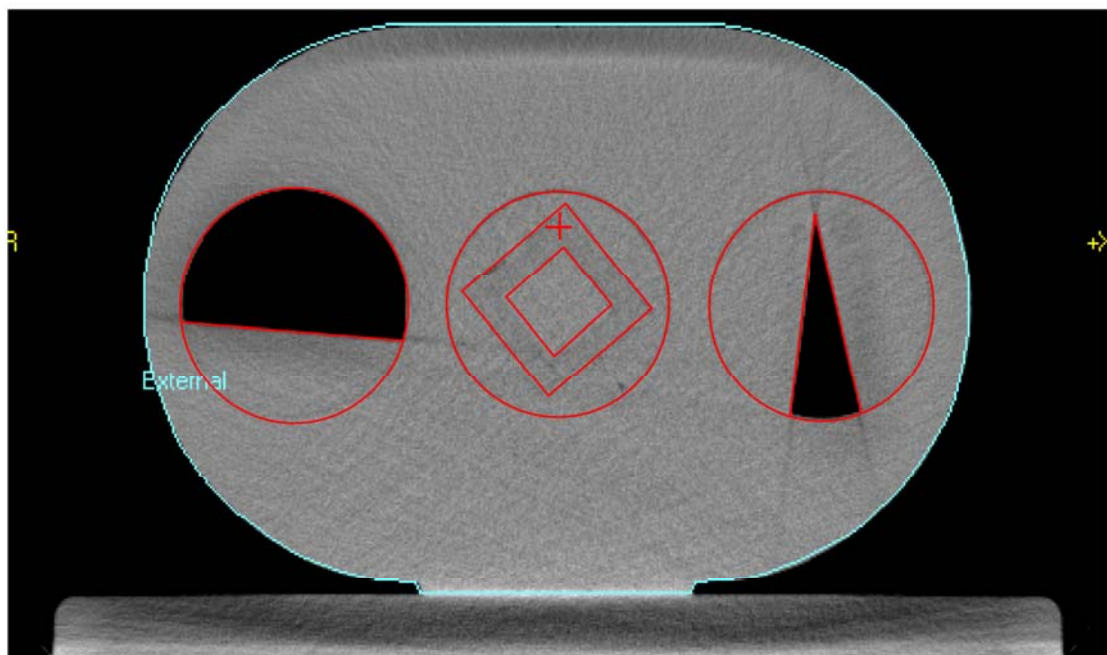
QUASAR Body Phantom

A cost effective tool designed to test the complex 3D geometrical features of CT simulators and radiation therapy planning systems, the QUASAR Body Phantom incorporates a variety of test objects in a solid acrylic housing. The QUASAR Body Phantom and its partner the QUASAR Beam Geometry Phantom were developed⁽¹⁾ by Jake Van Dyk at the London Regional Cancer Centre. These phantoms are designed to enable many of the nondosimetric quality assurance tests recommended by TG 53⁽²⁾.



Features and functions that can be tested using the QUASAR Body Phantom include:

- Geometric accuracy of 2D images and 3D image reconstructions
- 2D and 3D measurement tools including volume calculation accuracy
- Automatic, semi-automatic and manual boundary identification tools
- Automargining tools
- Representation and manipulation of contoured patient anatomy
- Dose volume histograms
- Conversion of CT numbers to relative electron densities
- Comparison of display on CT sims, RTPS and other imaging work stations
- Image transfer, storage, retrieval, Dicom tools on all workstations



The QUASAR Quality Assurance System for Advanced Radiotherapy tests a wide variety of dosimetric and nondosimetric functions of Radiation Therapy Planning Systems and CT simulators using a single set of test objects.

A valuable part of any quality assurance program the QUASAR phantoms are ready to be incorporated into your QA protocols today. The phantoms are used for regularly scheduled testing, as well as commissioning new systems and upgrades, and testing repairs.

QUASAR provides you with the confidence that your radiation treatment planning software and CT simulators are performing to their full potential.

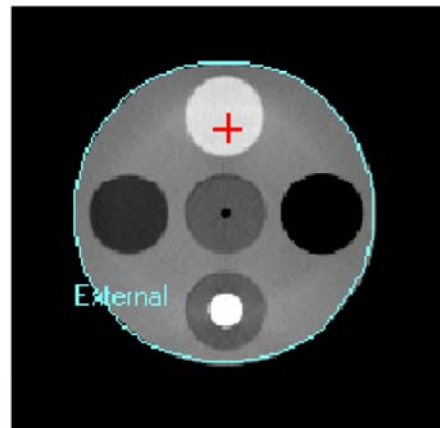
Body Phantom Specifications



- Main body component, acrylic, oval shape, 20 cm high, 30 cm wide, 8 cm long
- 3 openings for Cylindrical Inserts, each opening is 8 cm diameter by 8 cm long
- Electron density extension, 12 cm diameter with 5 openings at 2.5 cm diameter
- Laser alignment marks
- Materials: acrylic, Delrin, polyethylene, epoxy resin (Electron Density rods), rubber
- Container for storage and handling, optional shipping case
- User's Guide with Quality Assurance Worksheets

Cylindrical Inserts

- 27 cc acrylic cube within a 125 cc Delrin cube, within an 8 cm diameter acrylic cylinder, 8 cm long
- 20° air wedge (40 cc) within an 8 cm diameter acrylic cylinder including two Delrin cylinders:
 - 5 mm diameter by 5 cm long (.98 cc)
 - 10 mm diameter by 5 cm long (3.9 cc)
- 60° air wedge in 8 cm diameter acrylic including three Delrin spheres 40mm, 20mm and 10mm dia.
- Electron Density rods, 2.5 cm diameter by 18 mm long; relative electron density (RED)
 - Lung (Inhale) RED = 0.190
 - Polyethylene RED = 0.945
 - Water Equivalent RED = 1.002
 - Trabecular Bone RED = 1.117
 - Dense Bone RED = 1.512



References:

- 1) A Quality Assurance Phantom for Three-Dimensional Radiation Therapy Treatment Planning, Tim Craig, Denis Brochu, and Jake Van Dyk; Int. J. Radiation Oncology Biol. Phys., Vol. 44, No. 4, pp. 955-966, 1999.
- 2) AAPM Radiation Therapy Committee Task Group 53: Quality Assurance for Clinical Radiotherapy Treatment Planning, Benedick Fraass, Karen Doppke, Margie Hunt, Gerald Kutcher, George Starkschall, Robin Stern, Jake Van Dyk; Med. Phys. 25 (10), October 1998, pp. 1773-1829.

Modus Medical Devices Inc
 781 Richmond Street, Suite 201
 London, Ontario, Canada, N6A 3H4
 Phone (519) 438-2409
 Toll free (866) 862-9682
 Web site: www.modusmed.com
 email: info@modusmed.com

Distributed by: