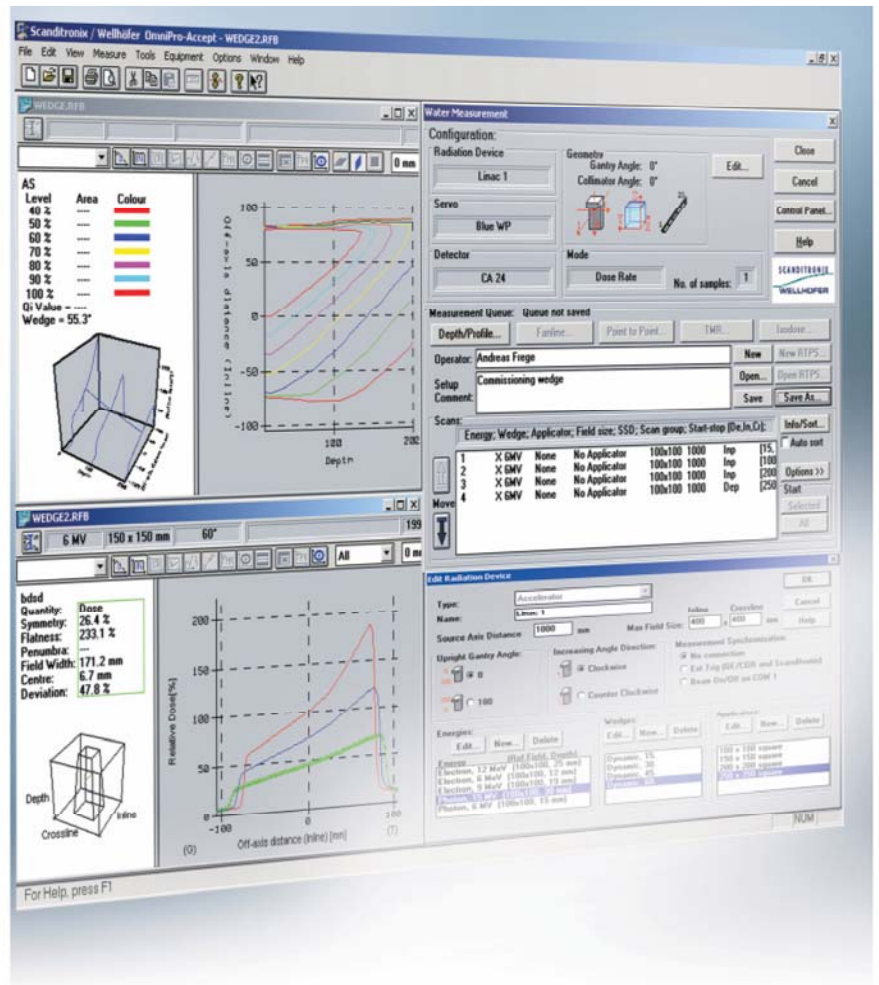


Advanced commissioning and acceptance software
OmniPro™-Accept



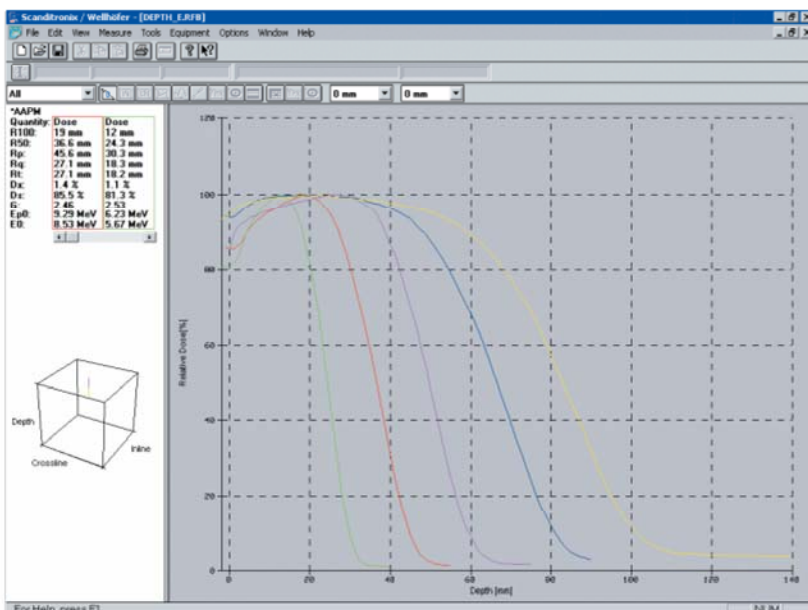
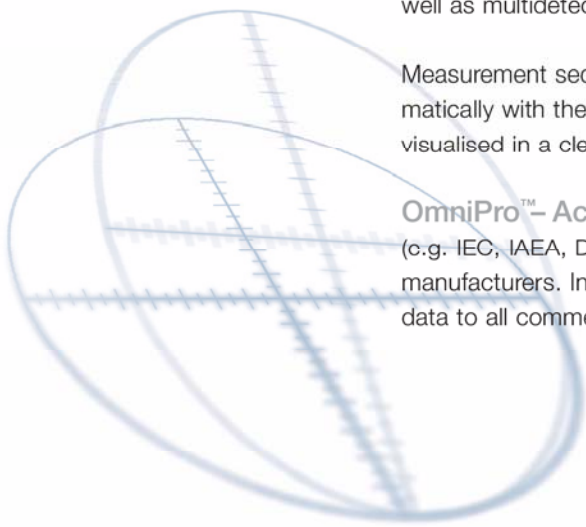
OmniPro™ – Accept, the integrated solution for data acquisition and analysis in dosimetry

OmniPro™ – Accept is the advanced software platform to facilitate fast and accurate commissioning and quality control in therapy radiation fields.

OmniPro™ – Accept incorporates latest software technology to seamlessly integrate a variety of Scanditronix Wellhöfer devices such as waterphantoms, film digitizers, in-air scanners, all types of detectors as well as multidetector arrays.

Measurement sequences can easily be set-up or generated automatically with the intuitive graphical environment. The measured data is visualised in a clear, informative way to allow fast and precise analysis.

OmniPro™ – Accept supports all commonly used dosimetry protocols (c.g. IEC, IAEA, DIN...) as well as the specifications of the LINAC manufacturers. Interface programs for conversion and transfer of beam data to all commercial RTP systems are available.



Edit Electron Depth Parameters

Name: Electron

R 100 Depth of max value

R ref Reference depth R50 * 0.6 - 1mm

R 50 Half value depth AAPM TG51 calc.

R User defined values 0 ± 0 ±

R t R t Therapeutic range ± level 90 ±

DIN method

R p Practical range

R q

D s Dose at surface 0.5 mm

Dmax Dose at dose maximum

D x X-Ray background Last Point

G Dose gradient Rp/(Rp-Rq)

E p0 Most probable energy Ep0 Method 1

E 0 Mean energy AAPM 1 to 2 calc.

Parameters marked with * will not be displayed for ionization curves.

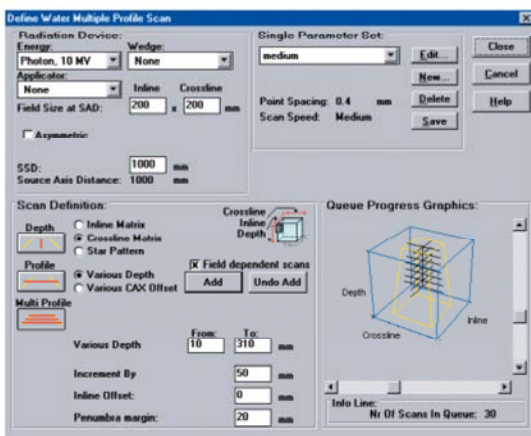
Protocols: AAPM25 AAPM51 DIN IAEA ICRU IEC IPMB JARP NACP NCS Elekta GE Siemens Varian

OmniPro™ – Accept provides powerful filter functions to select data view. Use icon buttons to view depth doses, profiles, fanlines, point to point, isodoses, TMR and absolute dose.

Real-time parametrization is done directly during measurement according to all standard dosimetry protocols. Only one click to convert from ionization to dose.

Features

- Integration of water, in air and film devices
- Integration of I'mRT QA device
- Intuitive and informative graphic display
- Backward compatibility with RFAPLUS and WP700 data (1D profiles + isodoses)
- Data in the coordinate system of the accelerator
- Real-time data analysis
- Powerful tools to create and administer measurement queues
- Support of all dosimetry protocols and LINAC manufacturer specifications
- Multi-tasking, also during measurements
- Filters for easy handling of large data sets
- Real time isodose measurements
- Isodose calculation
- TMR measurements and %DD/TMR calculations
- Calibration of ion chambers
- Absolute dosimetry
- Automatic output factor table generation
- Wizard for measurement and conversion of all data needed for RTP systems
- Data tabulation
- Complete context sensitive and searchable Help function
- Windows® compatible – easy exchange of data with Cut-Copy-Paste into Excel or other Windows® applications



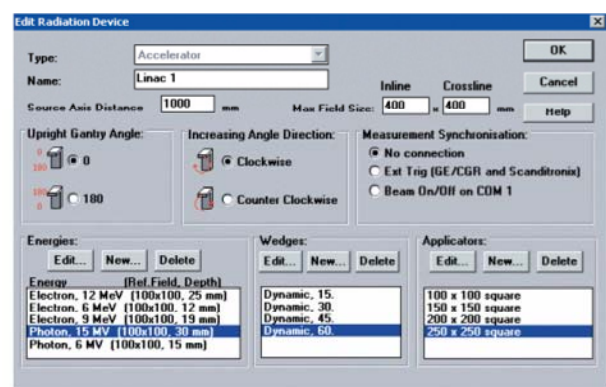
OmniPro™- Accept provides an intuitive and powerful set-up of scanning sequences. The scanning order can be sorted manually or automatically to ensure the most efficient use of the beam time.

The ultimate commissioning tool

The advanced OmniPro™- Accept RTPS commissioning option guides the user through the entire commissioning process. It prepares the queue containing all necessary measurements, it converts the data and in addition provides tools to verify the consistency between measured and converted data.

OmniPro™- Accept strictly follows the specification of each planning system, matching the radiation devices at the clinic with exactly the demands of the RTPS.

- Measurements sorted to give the highest efficiency
- Calculates the expected time to complete the commissioning
- Prompts the user when an accelerator parameter has to be changed
- Automatic sigma and virtual source parameter calculation



Fast selection of predefined equipment gives an overview and ensures that complete data is stored with the measured data.

Product range

Dosimetry in Radiotherapy

- Relative Dosimetry
- IMRT
- Absolute Dosimetry
- In Vivo Dosimetry
- Software Applications
- Film Dosimetry
- Quality Assurance
- Patient Positioning Lasers

Dosimetry in Radiology

- Patient Dose Monitoring
- QA of Film Processing Units
- QA of X-Ray Units
- QA of Computed Tomography
- QA of Ultrasound Units

Sweden: Scanditronix Wellhöfer AB – Stålgatan 14 – SE-754 50 Uppsala
Tel.: +46 18 18 07 00 Fax: +46 18 12 75 52

Germany: Scanditronix Wellhöfer GmbH – Bahnhofstr. 5 – DE-90592 Schwarzenbruck
Tel.: +49 9128 607 0 Fax: +49 9128 607 10

USA: Scanditronix Wellhofer North America – 3150 Stage Post Drive, Suite 110 – Bartlett, TN 38133
Tel.: +1 901 386 2242 Fax: +1 901 382 9453

www.scanditronix-wellhofer.com info@scanditronix-wellhofer.com